



Comparison of the response using ICR mice derived from three different sources to multiple low-dose streptozotocin-induced diabetes mellitus

Do Yeon Lee¹, Myeong Hwan Kim¹, Hye Rin Suh¹, Young Suk Jung², Dae Youn Hwang³, Kil Soo Kim^{1,*}

¹College of Veterinary Medicine, Kyungpook National University, Daegu 41566, Korea

²Department of Pharmacy, College of Pharmacy, Pusan National University, Busan 46241, Korea

³Department of Biomaterials Science, College of Natural Resources & Life Science/Life and Industry Convergence Research Institute, Pusan National University, Miryang 50463, Korea

This study was conducted to compare the multiple low-dose streptozotocin (MLDS)-induced diabetic patterns of Korl:ICR, A:ICR, and B:ICR mice obtained from three different sources. Six-week-old male ICR mice were obtained from three different sources. Korl:ICR mice were kindly provided by the National Institute of Food and Drug Safety Evaluation (NIFDS). The other two groups of ICR mice were purchased from different vendors located in the United States (A:ICR) and Japan (B:ICR). All ICR mice that received MLDS exhibited overt diabetic symptoms throughout the study, and the incidence and development of diabetes mellitus were similar among the three ICR groups. The diabetic mice exhibited hyperglycemia, loss of body weight gain, decreased plasma insulin levels, impaired glucose tolerance, decreased number of insulin-positive cells, and decreased size of β -cells in the pancreas. The diabetes symptoms increased as the blood glucose level increased in the three ICR groups. In particular, the level of blood glucose in the STZ-treated group was higher in Korl:ICR and A:ICR mice than in B:ICR mice. The plasma insulin levels, glucose tolerance, blood chemistry, and morphological appearance of the pancreas were very similar in the ICR groups obtained from the three different sources. In conclusion, our results suggest that Korl:ICR, A:ICR, and B:ICR mice from different sources had similar overall responses to multiple low-dose STZ to induce diabetes mellitus.

Keywords: Korl:ICR mice, multiple low-dose streptozotocin, diabetes mellitus, hyperglycemia

Received 4 May 2017; Revised version received 16 June 2017; Accepted 17 June 2017

A proper animal experimental design takes into consideration the species, strain, and sub-strain. Laboratory animals are broadly categorized into inbred, outbred, hybrid, recombinant inbred, and mixed breeds depending on the genetic background. Outbred rodents, such as ICR mice and Sprague Dawley rats, offer a varied genetic background, which is due to the less-rigorous genetic characterization and genetic quality control. Outbreds often lack complete genetic information at the individual level, which may lead to significant undetected genetic variation [1-3]. However, outbreds have been

widely used in animal experimentation and have many advantages. Rodents have been selected to develop various models of human disease [4]. ICR mice as an outbred stock were first established by Hauschka at the Institute for Cancer Research after the introduction of Swiss mice into the United States from Lausanne in Switzerland [5]. ICR mice are also widely used in safety and efficacy testing, cancer research, aging studies, transgenic experiments, and gene mapping strategies [6,7].

Animal models have played a critical role in studies on

*Corresponding author: Kil Soo Kim, College of Veterinary Medicine, Kyungpook National University, 80 Daehakro, Buk-gu, Daegu 41566, Korea
Tel: +82-53-950-7792; Fax: +82-53-950-5955; E-mail: kskim728@knu.ac.kr

This is an Open Access article distributed under the terms of the Creative Commons Attribution Non-Commercial License (<http://creativecommons.org/licenses/by-nc/3.0>) which permits unrestricted non-commercial use, distribution, and reproduction in any medium, provided the original work is properly cited.

disease pathophysiology and in the evaluation of therapeutics and treatments *in vivo* [7]. Diabetes mellitus is one of the most devastating chronic diseases; it is a metabolic disease mainly characterized by chronic hyperglycemia, a condition related to abnormal insulin secretion by pancreatic β cells, which results from either insulin resistance or impairment of insulin secretion [8,9]. Diabetes mellitus results in neuropathy, nephropathy, retinopathy, and cardiovascular disease [10].

Streptozotocin (STZ), a glucosamine-nitrosourea compound derived from *Streptomyces achromogenes*, is a broad-spectrum antibiotic with unique toxic selectivity for the β cells in the pancreatic islets of Langerhans. STZ is employed as a cytotoxic glucose analogue that tends to accumulate in pancreatic β cells through the action of glucose transporter2 [11]. STZ damages pancreatic β cells, resulting in hypoinsulinemia and hyperglycemia.

ICR mice are commonly used for various studies, and several mouse strains, including ICR mice, C57BL/6 mice, and BALB/c mice, have been utilized to conduct many experiments in studies on diabetes mellitus [12-14]. Although C57BL/6 mice are known to be more susceptible to multiple low-dose streptozotocin (MLDS)-induced diabetes [15], the most suitable animal species and strain to produce animal models of diabetes mellitus to evaluate the anti-diabetic activity of different treatments has not been determined. Furthermore, no study has performed a comparative analysis of the responses of specific mice obtained from different sources to chemicals that cause diabetes mellitus. Therefore, the present study was conducted to compare the responses of ICR mice (Korl:ICR, A:ICR, and B:ICR) obtained from three difference sources to STZ-induced diabetes mellitus.

Materials and Methods

Animal experiment

Six-week-old male ICR mice were obtained from three difference sources. Korl:ICR mice were kindly provided by the Department of Laboratory Animal Resources in the National Institute of Food and Drug Safety Evaluation (NIFDS, Cheongju, Korea). The other two ICR groups of ICR mice were purchased from different vendors located in the United States (A:ICR) and Japan (B:ICR). All mice were given *ad libitum* access to a standard irradiated chow diet (Purina, Seoul, Korea) and sterilized water. During the experiment, mice were maintained in a specific pathogen-free state under

a strict light cycle (lights on at 07:00 and off at 19:00) at $22\pm 2^\circ\text{C}$ and $50\pm 10\%$ relative humidity. The mice were housed in the Kyungpook National University-Laboratory Animal Resources Center. All animal experiments were performed in accordance with the Guidelines for Animal Care and Use of Kyungpook National University.

The multiple low-dose streptozotocin (MLDS) diabetic mouse model

The Korl:ICR, A:ICR, and B:ICR mouse (six-weeks-old, $n=42$) groups were each divided into two groups (normal control group and MLDS-induced diabetic group, $n=7$ mice each). After an initial acclimation period (7 days), male ICR mice were given STZ (40 mg/kg *i.p.*, dissolved in ice-cold 0.025 M sodium citrate-buffered solution, pH 4.5, freshly made right before injection) in 50 mM Na-citrate buffer, pH 4.5, for 5 consecutive days to induce chemical injury to the islet cells. Fasting blood glucose levels were measured 3 days after the final STZ treatment. Mice with a blood glucose concentration above 250 mg/dL were considered diabetic. Seven age-matched mice were intraperitoneally injected with the buffer solution as a control. For the next 8 weeks, body weight and 4 h fasting blood glucose levels were measured using an electronic balance (Mettler Toledo, Greifensee, Switzerland) and a glucometer (Super Glucocard II, Arkray Inc., Kyoto, Japan), respectively, once a week.

Oral glucose tolerance test

At the end of the 8-week observation, the oral glucose tolerance test (OGTT) was performed. All mice were fasted for 4 h before the OGTT. At 0 min, a drop of blood (5 μL) was taken via a tail nick before giving the oral glucose load. Mice were then given a glucose load (2 g/kg) in distilled water. Blood samples (40 μL) were obtained at 30, 60, 90, and 120 min after the glucose load for the determination of blood glucose with a glucometer. Plasma insulin levels were assayed using an enzyme-linked immunosorbent assay kit (Mercodia, Switzerland).

Serum biochemical measurements

Serum levels of aspartate aminotransferase (AST), alanine aminotransferase (ALT), alkaline phosphatase (ALP), creatinine (CRE), urea (URE), total protein (TP), and total cholesterol (TC), triglyceride (TG) were measured using commercial kits (Asan Pharmaceutical

Co., Seoul, Korea) with an automatic chemistry analyzer (Hitachi 7180; Hitachi, Tokyo, Japan).

Histological examination

Animals were euthanized by CO₂ inhalation, and the pancreas was removed, fixed with 4% paraformaldehyde, and embedded in paraffin. Paraffin block samples were cut into 5- μ m sections and stained with hematoxylin and eosin (H&E) and anti-insulin antibody for histological observation.

Statistical analysis

The data are presented as the mean \pm standard deviation (SD). Statistical analysis was performed using SAS version 9.1 (SAS Institute Inc., Cary, NC, USA). Student's t-test was used for comparisons between the control and sample groups. A *P* value < 0.05 was considered significant throughout the study.

Results

Body weight

The body weight changes in the experimental groups are shown in Figure 1. The body weights of the mice in the normal groups of Korl:ICR, A:ICR, and B:ICR mice were similar at the beginning of the experiments (Figure 1). The three groups of normal ICR mice gained weight steadily at the same rate throughout the experimental period. Body weight increased in the order of the Korl:ICR, A:ICR, and B:ICR groups compared to the

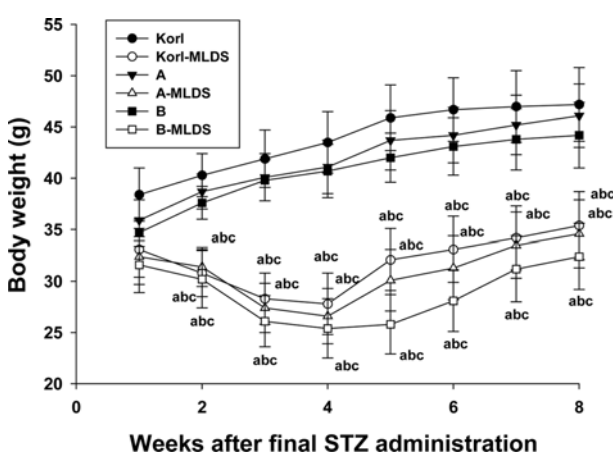


Figure 1. The body weight in multiple low dose streptozotocin induced diabetic ICR mice. The data shown represent the means \pm SD (n=7 per group). a, *P*<0.05 significant difference vs. Korl:ICR group. b, *P*<0.05 significant difference vs. A:ICR group. c, *P*<0.05 significant difference vs. B:ICR group.

normal control group, and the body weight changes were similar. After 8 weeks, the Korl:ICR mice were about 7% heavier than the B:ICR mice. MLDS caused rapid and significant decreases in body weight. These results show that the MLDS treatment to induce diabetes mellitus did not result in significant differences in the body weight parameter among the three ICR groups.

Blood glucose levels

The blood glucose levels were measured once a week for 8 weeks (Figure 2). From 1 week to 8 weeks after the final STZ treatment, the blood glucose levels of the MLDS-induced mice were significantly (*P*<0.05) higher than those of the normal mice in all ICR mouse groups. The blood glucose levels were the highest 3-4 weeks after the final STZ treatment. Similar fluctuations in the blood glucose levels were observed in the Korl:ICR, A:ICR, and B:ICR mice. Therefore, the present results indicate that the Korl:ICR, A:ICR, and B:ICR mice showed similar blood glucose level patterns following MLDS treatment.

Plasma insulin levels

Plasma insulin levels were measured 8 weeks after the final STZ administration (Figure 3). Compared to the control group, the MLDS-induced diabetic mice in the Korl:ICR, A:ICR, and B:ICR mouse groups exhibited significant decreases in their plasma insulin levels (*P*< 0.05).

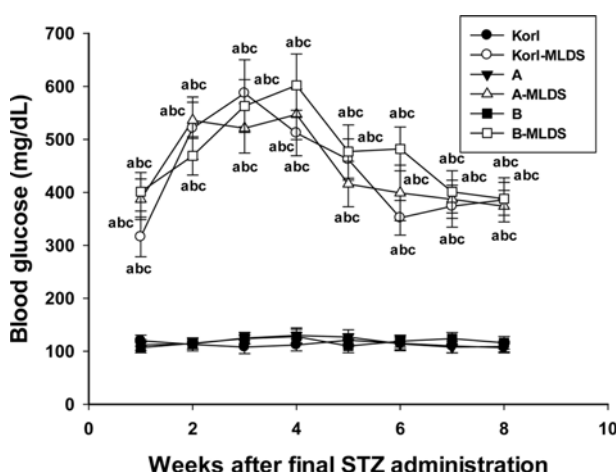


Figure 2. The blood glucose levels in multiple low dose streptozotocin induced diabetic ICR mice. The data shown represent the means \pm SD (n=7 per group). a, *P*<0.05 significant difference vs. Korl:ICR group. b, *P*<0.05 significant difference vs. A:ICR group. c, *P*<0.05 significant difference vs. B:ICR group.

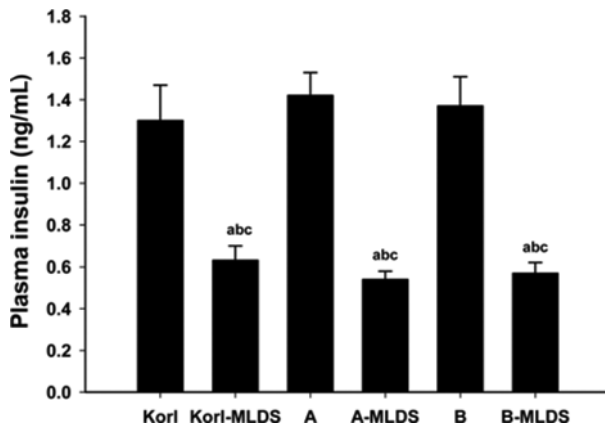


Figure 3. The plasma insulin levels in multiple low dose streptozotocin induced diabetic ICR mice. The data shown represent the means \pm SD (n=7 per group). a, $P<0.05$ significant difference vs. Kori:ICR group. b, $P<0.05$ significant difference vs. A:ICR group. c, $P<0.05$ significant difference vs. B:ICR group.

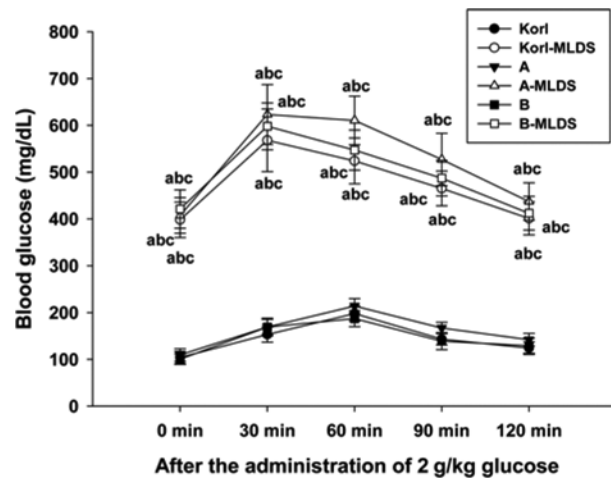


Figure 4. The oral glucose tolerance test (OGTT) in multiple low dose streptozotocin induced diabetic ICR mice. The data shown represent the means \pm SD (n=7 per group). a, $P<0.05$ significant difference vs. Kori:ICR group. b, $P<0.05$ significant difference vs. A:ICR group. c, $P<0.05$ significant difference vs. B:ICR group.

Oral glucose tolerance test

To further evaluate the MLDS-induced diabetes, oral glucose tolerance tests were conducted. The zero-time fasting blood glucose levels did not differ among the experimental groups. However, after glucose administration, the response to glucose loading in the normal control and MLDS-induced diabetic groups differed (Figure 4). In the normal control groups, the highest blood glucose level was observed 60 min after glucose administration, and the blood glucose level was near the normal value after 120 min. In the diabetic group, the highest blood glucose level was 600 mg/dL 30 min after glucose administration and returned to the initial level after 120 min.

Serum biochemistry

Changes in the levels of serum enzymes and substances

are presented in Table 1. All diabetic ICR mice treated with MLDS exhibited liver damage and kidney damage. The serum levels of AST, ALT, ALP, CRE, TC, and TG in the MLDS-induced diabetes groups increased significantly compared to those in the normal control group ($P<0.05$). On the other hand, serum TP levels were lower in the MLDS-induced diabetes groups than in the normal control group. However, the differences were not significant.

Histological changes in and insulin immunohistochemical evaluation of the pancreas

At the histological level, the Langerhans' islets of the pancreas exhibited a normal circular morphology with a regular cell lining in the normal mice (Figure 5). The

Table 1. Serum biochemical parameters of Kori:ICR, A:ICR and B:ICR mice at 8 weeks after final STZ treatment

Parameters/Group	Kori:ICR	Kori-MLDS	A:ICR	A-MLDS	B:ICR	B-MLDS
AST (U/L)	97.2 \pm 8.5	205.3 \pm 21.0 ^{abc}	93.1 \pm 7.9	187.3 \pm 18.2 ^{abc}	95.9 \pm 8.4	189.6 \pm 18.5 ^{abc}
ALT (U/L)	48.6 \pm 4.2	109.6 \pm 11.1 ^{abc}	46.4 \pm 4.3	99.8 \pm 10.2 ^{abc}	47.3 \pm 4.8	99.3 \pm 9.5 ^{abc}
ALP (U/L)	118.2 \pm 12.0	175.3 \pm 16.8 ^{abc}	113.7 \pm 12.3	169.6 \pm 15.1 ^{abc}	120.3 \pm 12.1	173.3 \pm 16.0 ^{abc}
CRE (mg/dL)	0.50 \pm 0.04	0.98 \pm 0.08 ^{abc}	0.51 \pm 0.04	0.95 \pm 0.08 ^{abc}	0.52 \pm 0.04	0.97 \pm 0.09 ^{abc}
URE (mg/dL)	16.74 \pm 1.54	19.34 \pm 1.90	16.01 \pm 1.64	18.81 \pm 1.83	16.64 \pm 1.79	18.74 \pm 1.71
TP (g/dL)	5.57 \pm 0.49	4.99 \pm 0.48	5.46 \pm 0.48	5.01 \pm 0.48	5.26 \pm 0.49	4.94 \pm 0.46
TC (mg/dL)	150.3 \pm 14.8	189.3 \pm 16.7	156.4 \pm 15.1	191.2 \pm 17.2	160.0 \pm 15.8	181.2 \pm 16.8
TG (mg/dL)	95.7 \pm 9.5	167.2 \pm 17.1 ^{abc}	98.3 \pm 9.4	160.1 \pm 16.7 ^{abc}	96.9 \pm 10.2	157.8 \pm 15.9 ^{abc}

The data shown represent the means \pm SD (n=7 per group).

AST: aspartate aminotransferase, ALT: alanine aminotransferase, ALP: alkaline phosphatase, CRE: creatinine, URE: urea, TP: total protein, TC: total cholesterol, TG: triglyceride

a, $P<0.05$ significant difference vs. Kori:ICR group. b, $P<0.05$ significant difference vs. A:ICR group. c, $P<0.05$ significant difference vs. B:ICR group.

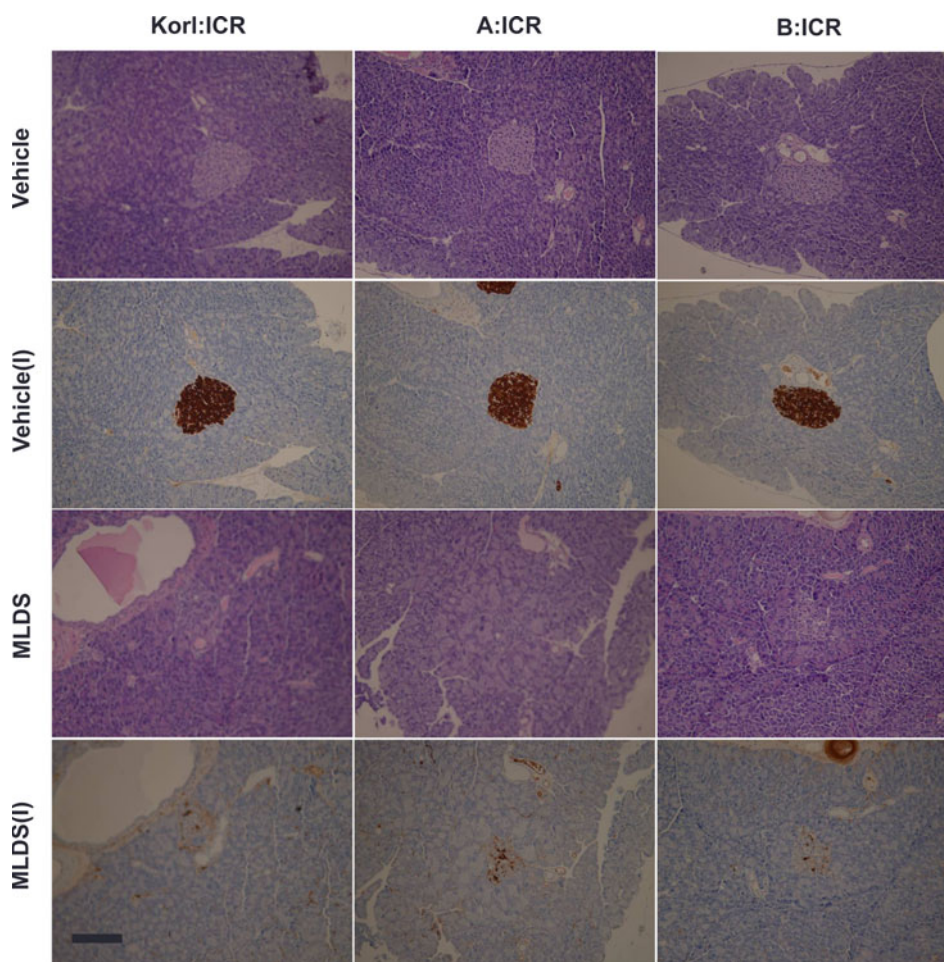


Figure 5. The histological and insulin immunostaining appearances of pancreas in multiple low dose streptozotocin induced diabetic ICR mice. The pancreas section was stained using hematoxylin and eosin (Vehicle and MLDS). The immunoreactive insulin-producing β -cells in MLDS-induced diabetic mice were remarkably reduced (Vehicle (I) and MLDS (I)). Magnification $\times 400$. Scale bars, 100 μm .

exocrine acini portion of the islets was well organized and had a normal morphology. In the MLDS-induced diabetic group, extensive cell atrophy, vacuolization of islets, and invasion of connective tissues in the parenchyma of pancreatic islets were detected. Immunohistochemistry showed insulin positivity in the pancreatic islets of the normal control mice. The numbers of immunoreactive insulin-producing β -cells in MLDS-induced diabetic mice were markedly lower in restricted pancreatic islets compared to the normal controls. Overall, the above results indicate that diabetes mellitus was successfully induced by MLDS treatment in ICR mice from three different sources.

Discussion

Animal models of diabetes mellitus have been widely

employed to evaluate therapeutic drugs and investigate the disease mechanisms. ICR mice, a type of outbred rodent, have been frequently applied to produce animal models of diabetes mellitus, but comparative studies of outbred animals obtained from different sources have not been conducted. STZ has been used in the clinical oncology field for the treatment of insulinomas and pancreatic β cell carcinoma [16-18], and it has been used in diabetes research as a tool to induce hyperglycemia in laboratory animals [15,19,20]. STZ causes the dysfunction of islet β -cells, including the induction of pancreatic cell apoptosis and inhibition of insulin gene expression and insulin synthesis [21,22].

This study investigated the outcome of MLDS-induced diabetes in Korl:ICR, A:ICR, and B:ICR mice obtained from three different sources. Diabetes mellitus was successfully induced by various combinations of

STZ concentrations in ICR mice [13,14]. The onset of diabetes (as determined by glucose levels) in all ICR mice occurred within the first week following MLDS induction. Weight loss is a major characteristic of diabetes mellitus, and it may result from protein wasting [23]. All ICR mice became hyperglycemic 1 week after the final MLDS treatment (Figure 2). The onset of diabetes after MLDS treatment in the Korl:ICR mice occurred slightly faster than in the B:ICR and C:ICR mice. The Korl:ICR, A:ICR, and B:ICR mice began to recover from the hyperglycemia by 4 weeks after MLDS induction. This study showed that MLDS treatment caused significant elevations in blood glucose levels in the Korl:ICR, A:ICR, and B:ICR mice, independent of the genetic background in the same outbred mice. Insulin promotes peripheral glucose utilization, inhibits glucagon secretion, and enhances glycogenesis. However, diabetes mellitus impairs the normal function of islets of secreting sufficient amounts of insulin [9]. In this study, all diabetic ICR mice treated with MLDS exhibited a significant decrease in serum insulin levels compared with those in the normal mice. MLDS treatment resulted in diabetes mellitus, as indicated the levels of fasting blood glucose and serum insulin. Similar results were also reported in other studies [11,24,25]. In the oral glucose tolerance test, all diabetic ICR mice treated with MLDS exhibited significant glucose intolerance compared with the normal mice. As expected, the MLDS treatment significantly increased the levels of serum AST, ALT, ALP, CRE, URE, TC, and TG and decreased levels of TP in all ICR mice compared with the normal control groups. Elevations in serum biomarker enzymes such as AST, ALT, ALP, CRE, URE, TC, and TG were observed in diabetic mice, indicating the deterioration of liver function (Table 1), possibly because STZ induced liver damage that caused the leakage of these enzymes into the blood [26]. In particular, the leakage of hepatic enzymes such as ALT and AST into the blood stream is directly associated with marked liver injury [27]. STZ-induced hepatic toxic events may occur in response to an excess of free fatty acids resulting from insulin impairment in diabetes mellitus [28]. High serum cholesterol and triglyceride levels are associated with diabetes mellitus [29]. The results of the present study indicated increased serum lipid concentrations in MLDS-induced diabetic mice. Based on these results, Korl:ICR mice are expected to be used with the more common A:ICR and B:ICR mice for assessments of liver function and diabetes

induction and diabetes screening. The histological structure of the pancreas was assessed in Korl:ICR, A:ICR, and B:ICR mice treated with MLDS. ICR mice from three different sources showed similar histopathological results. In the MLDS-induced diabetic group, extensive cell atrophy, vacuolization of islets, and invasion of connective tissues in the parenchyma of pancreatic islets were detected. Therefore, these results suggested that the histopathological characteristics of diabetes mellitus were successfully induced by MLDS treatment in ICR mice from three different sources without significant differences. No other toxicity changes in other organs following administration of MLDS was observed in the three different ICR mice. We investigated the diabetes mellitus-related responses of ICR mice from different sources to MLDS treatment. In this study, MLDS induced hyperglycemia, hypoinsulinemia, glucose intolerance, β cell dysfunction, and β cell loss to equal degrees in Korl:ICR, A:ICR, and B:ICR mice. The MLDS-induced diabetic ICR mice exhibited typical characteristics, including body weight loss, hyperglycemia, hypoinsulinemia, glucose intolerance, hepatic injury, moderate lipid abnormalities, and islet degeneration. Overall, the results of this study suggest that the Korl:ICR, A:ICR, and B:ICR mice from different sources had similar overall responses to diabetes mellitus induced by MLDS treatment. Therefore, our results suggest that Korl:ICR mice can be used similar to other ICR mice provided by commercial vendors to produce animal models of diabetes mellitus.

Acknowledgments

This project was supported by a grant from BIOREIN (Laboratory Animal Bio Resources Initiative) from the Ministry of Food and Drug Safety in 2015.

Conflict of interests The authors declare that there is no financial conflict of interests to publish these results.

References

1. Chia R, Achilli F, Festing MF, Fisher EM. The origins and uses of mouse outbred stocks. *Nat Genet* 2005; 37(11): 1181-1186.
2. Hubrecht RC, Kirkwood J. *The UFAW Handbook on the Care and Management of Laboratory and Other Research Animals*, 8th ed. Wiley-Blackwell. Oxford, 2010.
3. Vallender EJ, Miller GM. Nonhuman primate models in the genomic era: a paradigm shift. *ILAR J* 2013; 54(2): 154-165.
4. Fox JG, Anderson LC, Loew FM, Quimby FW. *Laboratory*

- Animal Medicine, 2nd ed, Academic Press, New York, 2002.
- Cui S, Chesson C, Hope R. Genetic variation within and between strains of outbred Swiss mice. *Lab Anim* 1993; 27(2): 116-123.
 - Lehoczyk JA, Cai WW, Douglas JA, Moran JL, Beier DR, Innis JW. Description and genetic mapping of Polypodia: an X-linked dominant mouse mutant with ectopic caudal limbs and other malformations. *Mamm Genome* 2006; 17(9): 903-913.
 - Al-Awar A, Kupai K, Veszélka M, Szűcs G, Attieh Z, Murlasits Z, Török S, Pósa A, Varga C. Experimental Diabetes Mellitus in Different Animal Models. *J Diabetes Res* 2016; 2016: 9051426.
 - Horton ES. NIDDM--the devastating disease. *Diabetes Res Clin Pract* 1995; 28 Suppl: S3-11.
 - Wild S, Roglic G, Green A, Sicree R, King H. Global prevalence of diabetes: estimates for the year 2000 and projections for 2030. *Diabetes Care* 2004; 27(5): 1047-1053.
 - Danaei G, Finucane MM, Lu Y, Singh GM, Cowan MJ, Paciorek CJ, Lin JK, Farzadfar F, Khang YH, Stevens GA, Rao M, Ali MK, Riley LM, Robinson CA, Ezzati M; Global Burden of Metabolic Risk Factors of Chronic Diseases Collaborating Group (Blood Glucose). National, regional, and global trends in fasting plasma glucose and diabetes prevalence since 1980: systematic analysis of health examination surveys and epidemiological studies with 370 country-years and 2.7 million participants. *Lancet* 2011; 378(9785): 31-40.
 - Lenzen S. The mechanisms of alloxan- and streptozotocin-induced diabetes. *Diabetologia* 2008; 51(2): 216-226.
 - Skovso S. Modeling type 2 diabetes in rats using high fat diet and streptozotocin. *J Diabetes Investig* 2014; 5(4): 349-358.
 - Sakata N, Yoshimatsu G, Tsuchiya H, Egawa S, Unno M. Animal models of diabetes mellitus for islet transplantation. *Exp Diabetes Res* 2012; 2012: 256707.
 - Tesch GH, Nikolic-Paterson DJ. Recent insights into experimental mouse models of diabetic nephropathy. *Nephron Exp Nephrol* 2006; 104(2): e57-62.
 - Müller A, Schott-Ohly P, Dohle C, Gleichmann H. Differential regulation of Th1-type and Th2-type cytokine profiles in pancreatic islets of C57BL/6 and BALB/c mice by multiple low doses of streptozotocin. *Immunobiology* 2002; 205(1): 35-50.
 - Brentjens R, Saltz L. Islet cell tumors of the pancreas: the medical oncologist's perspective. *Surg Clin North Am* 2001; 81(3): 527-542.
 - Moertel CG, Lefkopoulo M, Lipsitz S, Hahn RG, Klaassen D. Streptozocin-doxorubicin, streptozocin-fluorouracil or chlorozotocin in the treatment of advanced islet-cell carcinoma. *N Engl J Med* 1992; 326(8): 519-523.
 - Dominguez S, Denys A, Madeira I, Hammel P, Vilgrain V, Menu Y, Bernades P, Ruzsiewicz P. Hepatic arterial chemoembolization with streptozotocin in patients with metastatic digestive endocrine tumours. *Eur J Gastroenterol Hepatol* 2000; 12(2): 151-157.
 - Yang SJ, Je Lee W, Kim EA, Dal Nam K, Hahn HG, Young Choi S, Cho SW. Effects of N-adamantyl-4-methylthiazol-2-amine on hyperglycemia, hyperlipidemia and oxidative stress in streptozotocin-induced diabetic rats. *Eur J Pharmacol* 2014; 736: 26-34.
 - Liu Y, Sun J, Rao S, Su Y, Li J, Li C, Xu S, Yang Y. Antidiabetic activity of mycelia selenium-polysaccharide from *Catathelasma ventricosum* in STZ-induced diabetic mice. *Food Chem Toxicol* 2013; 62: 285-291.
 - Szkudelski T. The mechanism of alloxan and streptozotocin action in B cells of the rat pancreas. *Physiol Res* 2001; 50(6): 537-546.
 - Konrad RJ, Kudlow JE. The role of O-linked protein glycosylation in beta-cell dysfunction. *Int J Mol Med* 2002; 10(5): 535-539.
 - Chen V, Ianuzzo CD. Dosage effect of streptozotocin on rat tissue enzyme activities and glycogen concentration. *Can J Physiol Pharmacol* 1982; 60(10): 1251-1256.
 - Herold KC, Vezys V, Sun Q, Viktora D, Seung E, Reiner S, Brown DR. Regulation of cytokine production during development of autoimmune diabetes induced with multiple low doses of streptozotocin. *J Immunol* 1996; 156(9): 3521-3527.
 - Ogawa J, Takahashi S, Fujiwara T, Fukushige J, Hosokawa T, Izumi T, Kurakata S, Horikoshi H. Troglitazone can prevent development of type 1 diabetes induced by multiple low-dose streptozotocin in mice. *Life Sci* 1999; 65(12): 1287-1296.
 - Holst JJ. The physiology of glucagon-like peptide 1. *Physiol Rev* 2007; 87(4): 1409-1439.
 - Giannini EG, Testa R, Savarino V. Liver enzyme alteration: a guide for clinicians. *CMAJ* 2005; 172(3): 367-379.
 - Harris EH. Elevated liver function tests in type 2 diabetes. *Clinical Diabetes*. 2005; 23(3): 115-119.
 - Liu Y, Sun J, Rao S, Su Y, Yang Y. Antihyperglycemic, antihyperlipidemic and antioxidant activities of polysaccharides from *Catathelasma ventricosum* in streptozotocin-induced diabetic mice. *Food Chem Toxicol* 2013; 57: 39-45.